

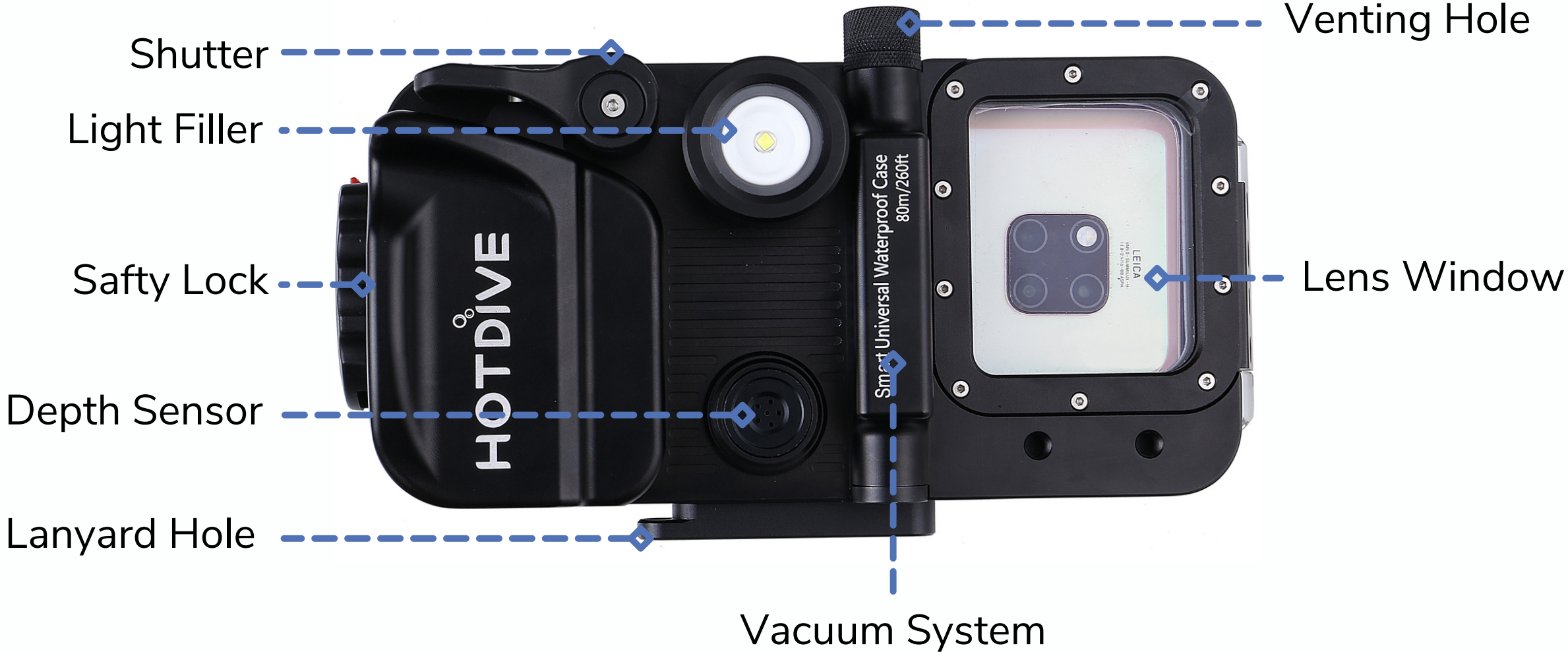
HOTDIVE

SMART PHONE HOUSING

MAKING DIVE EASY



SPECIFICATIONS



Depth: 65mm

210mm

115mm



SPECIFICATIONS & DIMENSIONS

- Material: 80% Aluminum+20% plastic
- Depth Rated: 80m/260feet
- Internal: 168 x 86 x 10 mm
- External: 210 x 110 x 65 mm
- Vacuum System: Automatic
- Depth Sensor: Yes(optional for pro)
- Temp sensor: Yes(optional for pro)



Universal Smart Phone Housing

FIT FOR ALL IPHONE SERIES
AND MOST OF ANDROID
PHONES

The phone size within 168*84*10MM, and
the camera viewfinder window is 50*60MM



Hotdive is equipped with a Nordic Semiconductor ultra-low power (ULP) wireless chip. The millisecond-level processing speed makes our in-depth monitoring more sensitive, and low power consumption has a stronger signal to ensure a smooth connection with the mobile phone.

In addition, it is equipped with a Swiss TE MS5083 depth sensor, which accurately monitors our depth data and temperature data in real time, and HOTDIVE can also calculate the ascent speed and issue safety warnings. HOTDIVE also has the function of an underwater compass, allowing us to know our diving direction at any time, making diving safer.

SMART HOUSING

Built-In Dive Computer



Compass



Depth Sensor



Dive Time



Ascending Rate



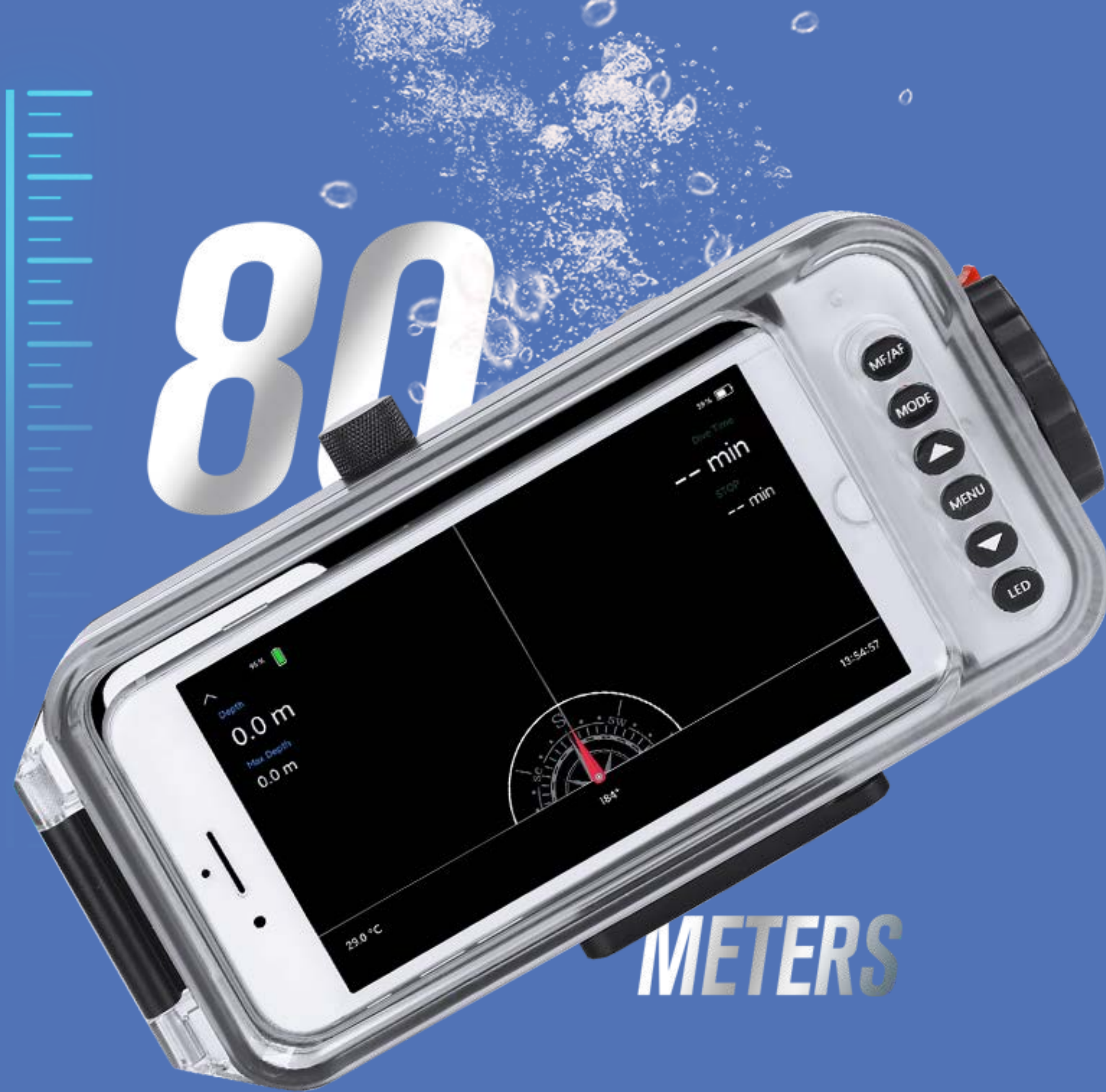
SMART AUTOMATIC AIR PUMP SYSTEM

The Hotdive housing has a built-in auto vacuum pump. The unique automatic vacuum system eliminates the traditional manual pump, makes it user-friendly, and achieving a real anti-fog effect, allowing us to obtain high-quality photos and videos.

BUILT-IN 3500MA LITHIUM BATTERY

The fill light can continuously illuminate for 100 minutes. If only used for photography and other functions, the battery of HOTDIVE can last for 20 days.





80M/260 Feets Waterproof

Precision machining allows the device to easily achieve a waterproof effect of 80 meters. The whole machine of HOTDIVE adopts precision CNC processing and production, and the product accuracy reaches $\pm 0.02\text{MM}$. Each device undergoes strict underwater pressure testing before leaving the factory to ensure that each device is strictly waterproof.

QUICK TO DOWNLOAD

Available in the App Store and Google Play



Download
From Google Play



Download
From App Store



Scuba Diving Modes & Freediving Mode

◦ Scuba Diving Mode ◦

(Set in HotDive APP)



Maximum
Depth Reminder



Diving Time
Reminder



Ascent Speed
Warning



◦ Freediving Mode ◦

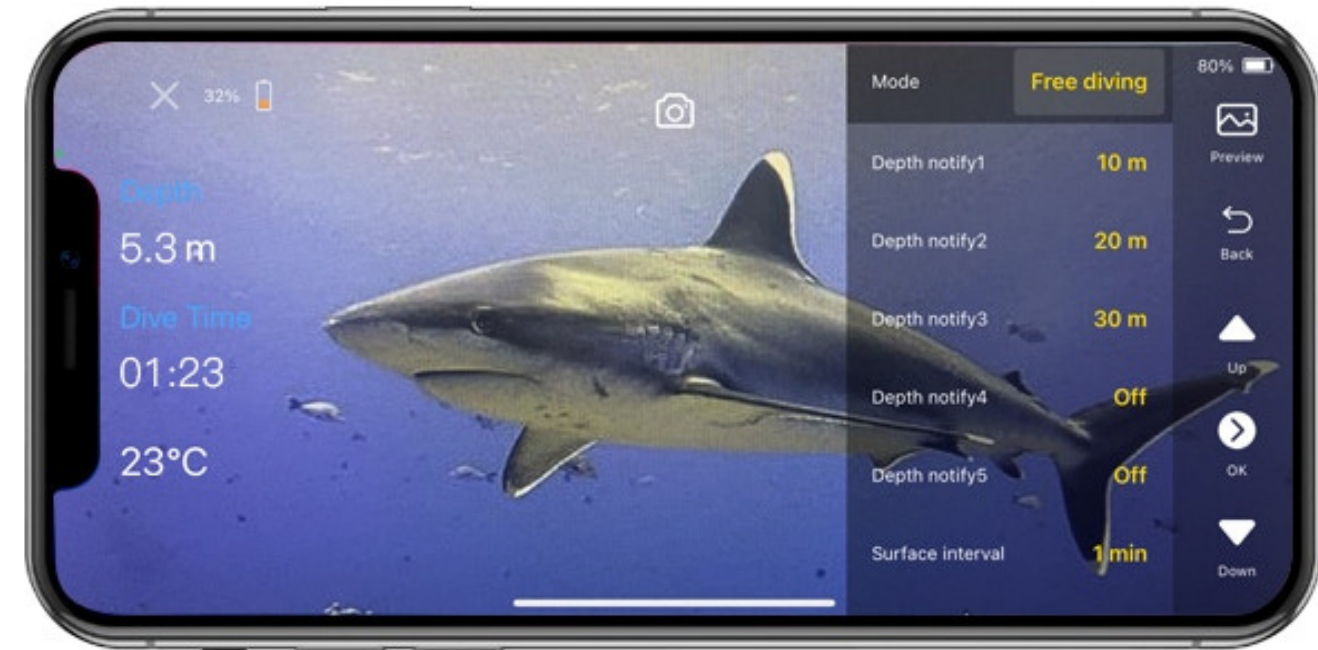
(Set in HotDive APP)



5 Different
Depth Reminders



Reminder For
Surface Break



Make It Your Own with Lenses



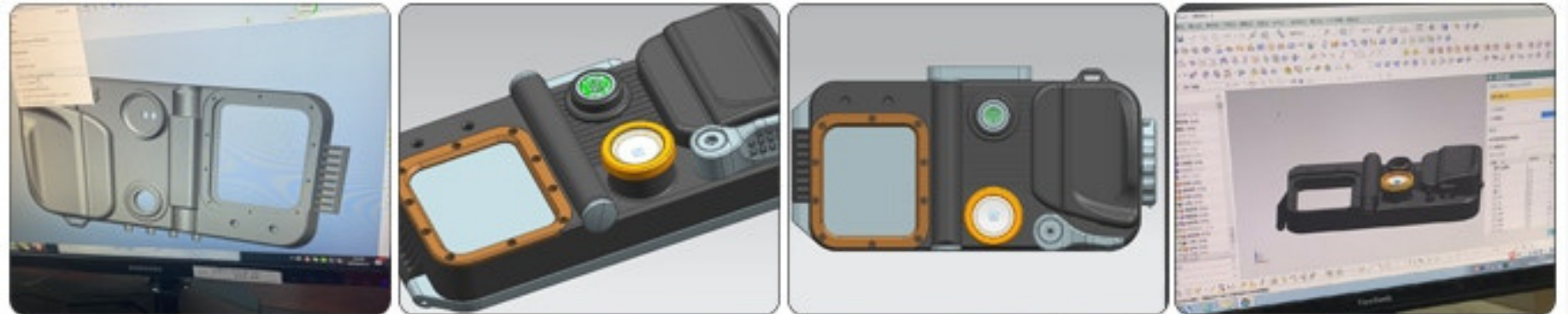
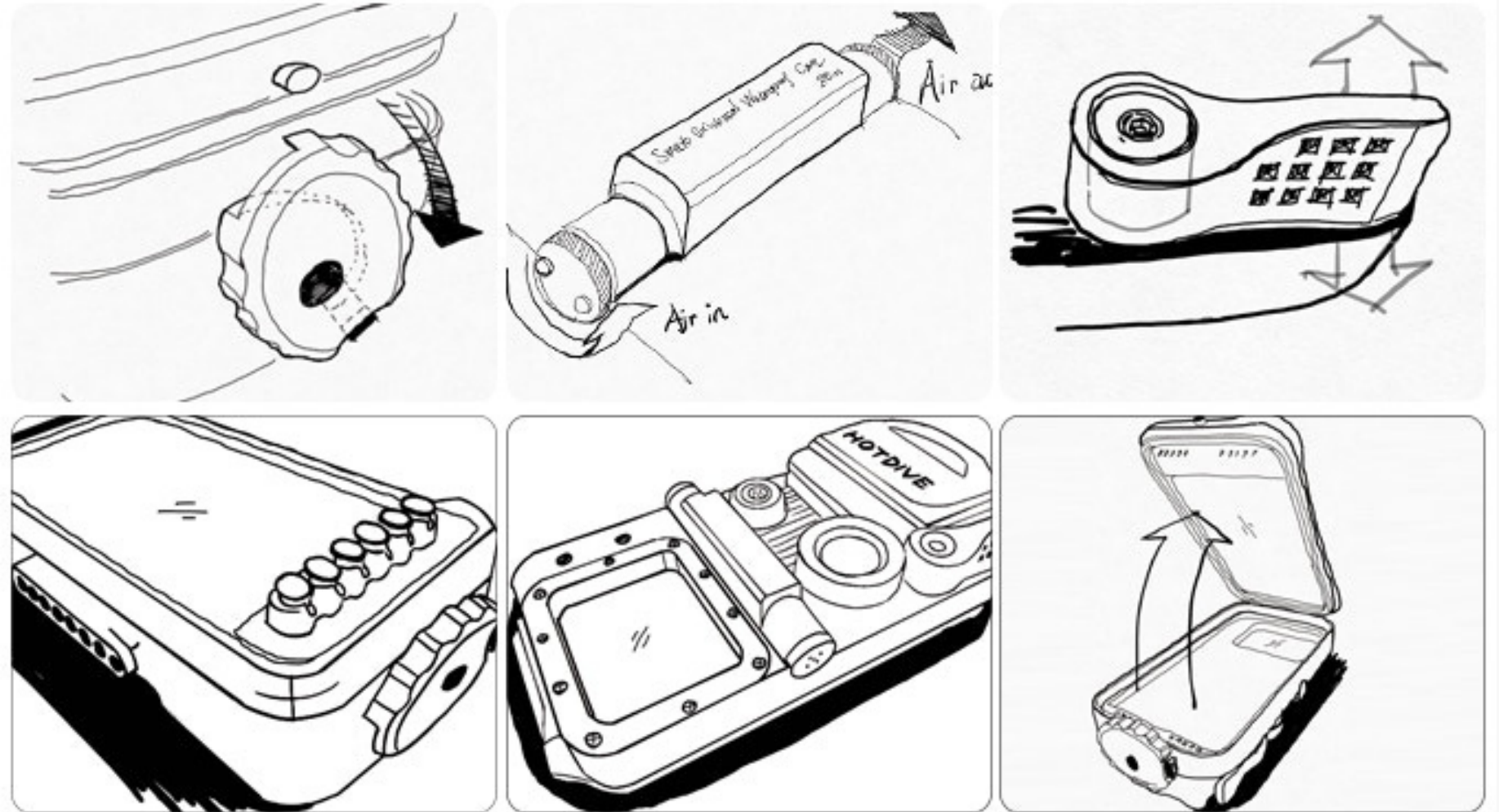
HotDive with Macro



HotDive with Wide Angle

HotDive

Production Process



H2 w/o Depth
Sensor
\$299/unit.

H2 Pro with
Depth Sensor
\$349/unit.

WHAT PEOPLE SAY



I am very happy with the case. Switching lenses in the app would be a great feature. and the dimming of the display while the recording is running should be prevented. Saturday I'm going to head for the Caribbean. 16:08



Bob Joziassse
about 2 months ago

I just came back from holidays and dove with the hot dive for the first time. It's great! It really works well! It is so cool to get nice pictures even at 20 m depth with the LED light. And the photos all right away on your phone ready to be shared. This product is really amazing! And the logbook is filled right away with the correct data. Perfect!



Mickaël Bettan

8月14日

Back from Astree wreck! Bad visibility at 40m so only pictures at ceiling with Hotdive Pro.



Kim Webb

10月11日 14:14

Visibility was terrible and yet the HotDive was able to capture some great pictures. So happy 🥰 These were taken yesterday at Tokai Maru in Guam 😊 iPhone 8plus was used.



What people say

A large whale shark is swimming diagonally from the bottom left towards the top right of the frame. The shark's head is in the upper right, showing its eye and mouth. Its body is covered in characteristic white spots on a greyish-blue background. The background is a clear, deep blue ocean.

FINALLY had a day to try out my HOTDIVE case. Firstly, when I pulled it out on the dive boat, it drew a crowd. Everyone wanted to know what it was and how it worked. After the dive, people gathered around and were very impressed with the quality and clarity of the pictures!

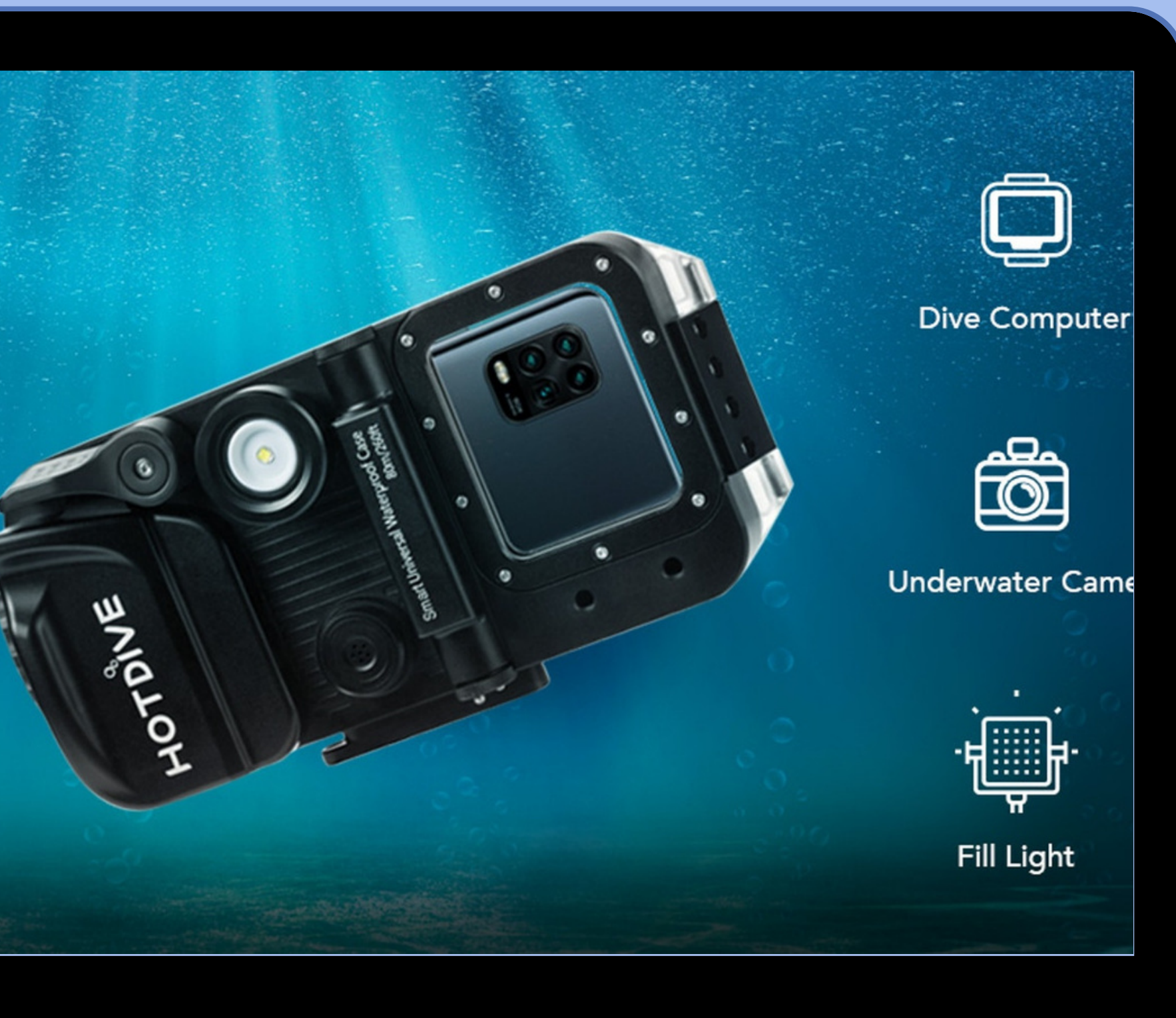
-Lynn Toler

"So much easier than using a GoPro. I'd rather have the images ready on my phone. I just popped my phone in, and it automatically connected to use the exterior camera button. I'll be taking this on every beach trip. I did buy a floating wrist strap just in case. "

- Kate Nicole

"I am very happy with the case. Switching lenses in the app would be a great feature. And the dimming of the display, while the recording is running, should be prevented."

-Martin Helmers



KICKSTARTER



CROWDFUNDING

£145,543 GBP by 765 backers
£124,866 GBP by 677 backers on Jan 1,
2021

MEET OUR TEAM



Eason Xiong
Founder of HotDive
Advanced Open Water
Diver

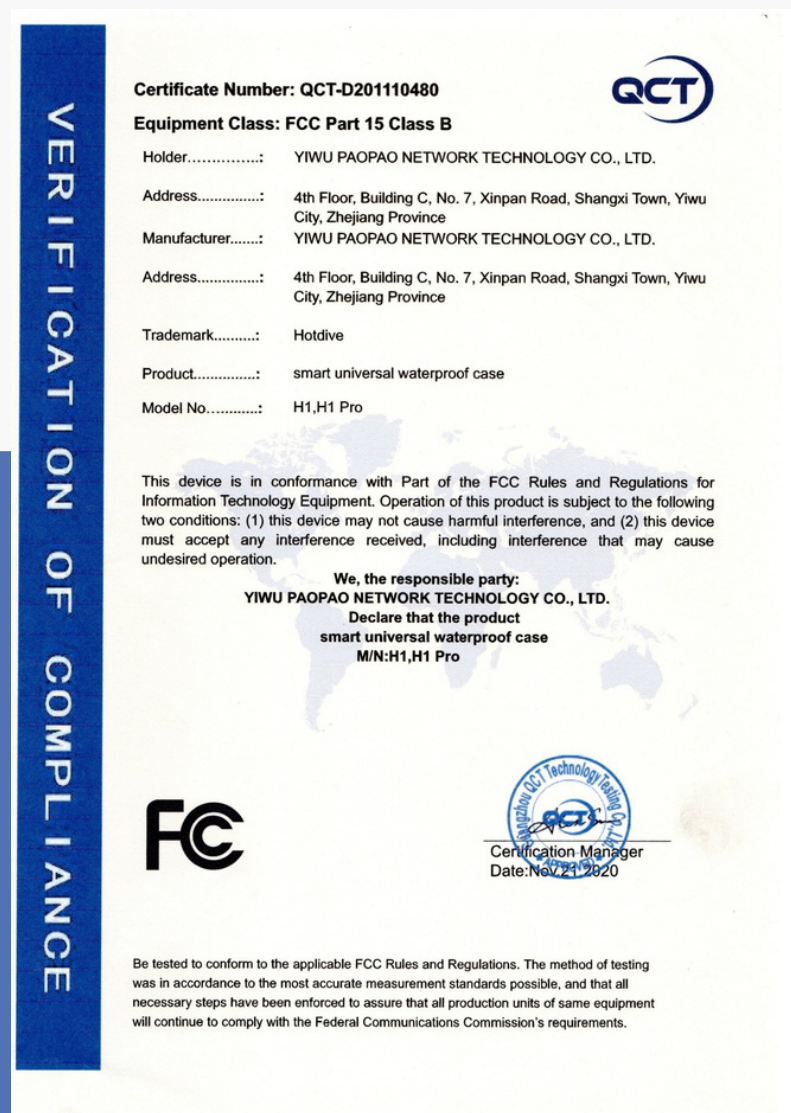


Alex Dong
Exterior Designer
Founder of VANE
Architect



Michael Shen
Product Manager
PADI Free Diving
Instructor

OUR CERTIFICATES



The company has a series of certifications like FCC, CE, MSDS, and international invention and design patents.

HOTDIVE

CONTACT US

Narwhal Technology (Dongguan) Co., Ltd
Room 301, No.62 Zhen'an East Road, Chang'an, Dongguan, China
Tel: +86 18029081686-Wechat/WhatsApp
E-mail: team@hotdive.cn
Tel: 0086 18029081686
Http:// www.hotdive.cn

